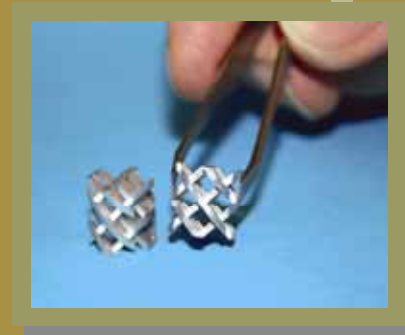
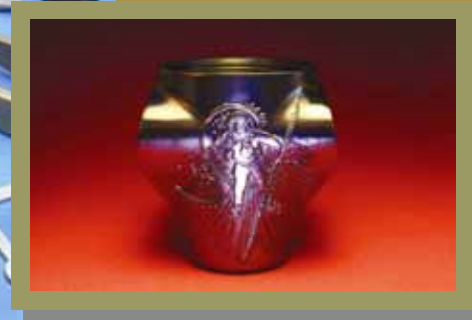


MM Precision casting process



Micro Metalsmiths Ltd
Kirkdale Rd
Kirkbymoorside
YO62 6PX
UK
Tel: +44(0)1751 432355
Fax: +44(0)1751 432061
E-Mail: sales@micrometalsmiths.co.uk
Web: www.micrometalsmiths.com



The MM Process... is a 'block moulding' version of the 'Lost Wax' method'. A fine plaster investment is applied under a vacuum. The plaster penetrates all external features and fills internal voids to ensure that, as the mould is formed, every detail of the wax patterns is faithfully reproduced.

www.micrometalsmiths.com



Wax injection



Wax tree



Wax patterns fixed to runner system to form tree.

Investing



Foundry box filled with Plaster in vacuum chamber.

Soluble cores can be used to form difficult internal detail.



Temporary soluble core

Wax pattern moulded around soluble core

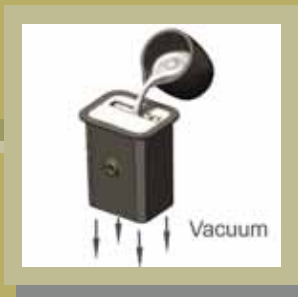
Wax pattern with core removed

Firing of moulds



Wax melted out and mould fired.

Pouring



Molten metal poured into mold with vacuum assist.

Finishing



Machining



De-gating



Wash



Mould material removed and metal tree washed.

Saw



Cast parts sawn off tree.